



THERA 650



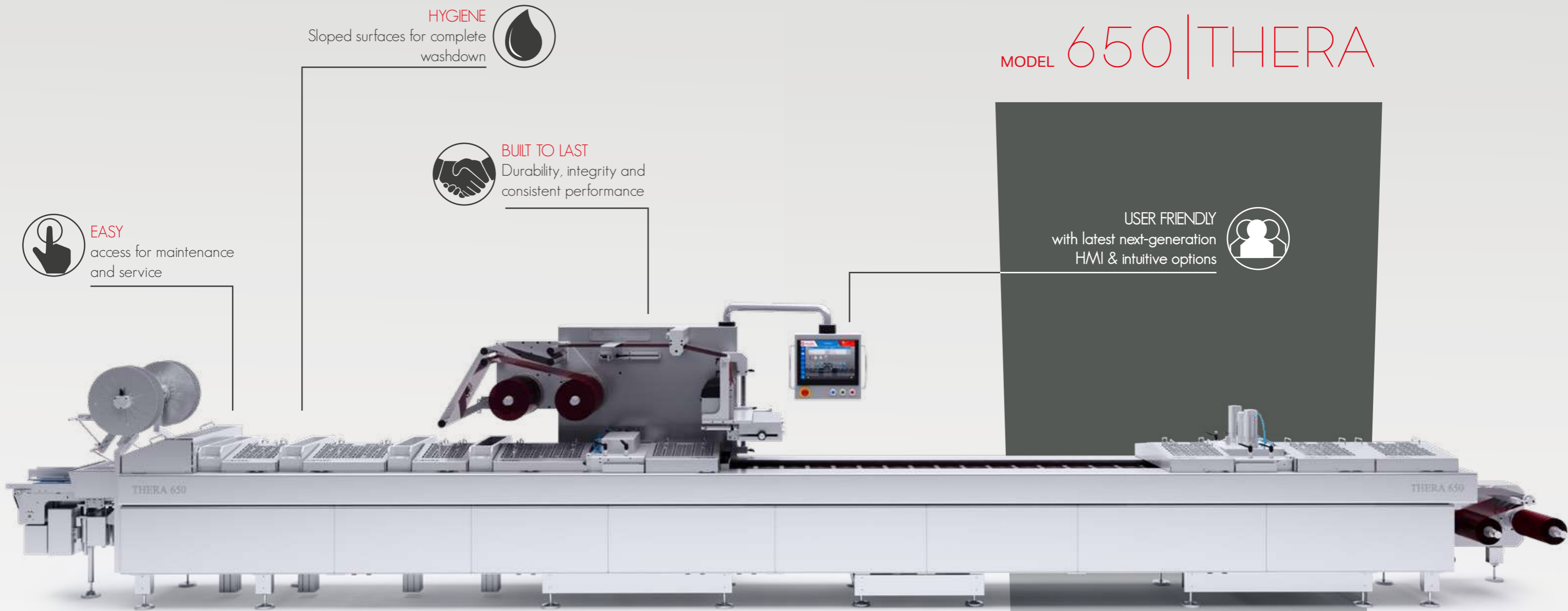
Cutting-edge technology,  
superior quality and high performance,  
matured throughout half a century  
of experience:

THERA 650

COLIMATIC FLAGSHIP!



# MODEL 650 | THERA



**HYGIENE**  
Sloped surfaces for complete washdown



**BUILT TO LAST**  
Durability, integrity and consistent performance



**EASY**  
access for maintenance and service

**USER FRIENDLY**  
with latest next-generation HMI & intuitive options



**TOP PERFORMANCE**  
The highest packaging output level, for this machinery range



**TAILOR MADE:**  
No limits to customization



**COMPATIBILITY**  
& synchronizations with a wide variety of devices & accessories

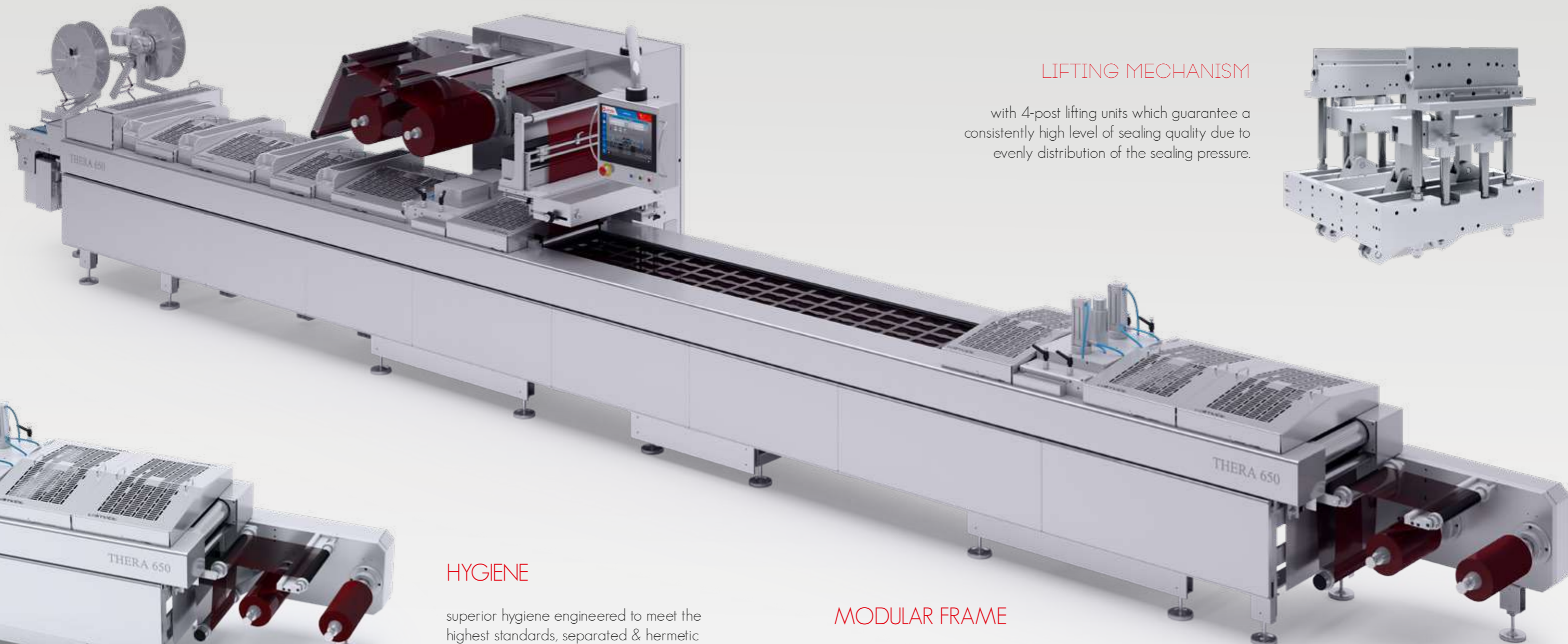


**Massive COST SAVINGS**  
on labor & packaging materials

**ROCK-SOLID**  
Stainless steel frame & components

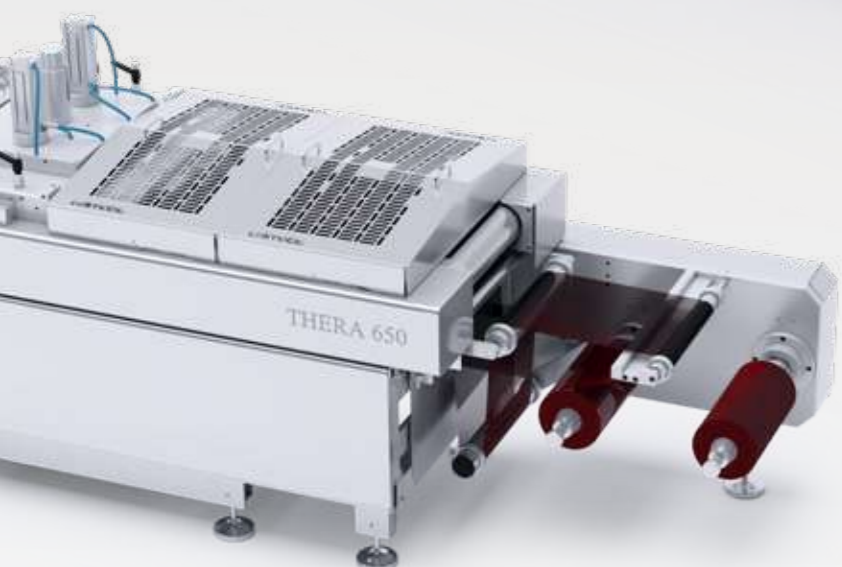
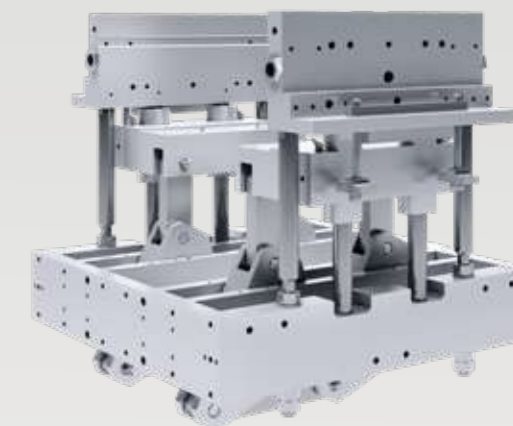






## LIFTING MECHANISM

with 4-post lifting units which guarantee a consistently high level of sealing quality due to evenly distribution of the sealing pressure.



## HYGIENE

superior hygiene engineered to meet the highest standards, separated & hermetic valve boxes; no sharp edges; sloped surfaces and optional water proof HMI.

## MODULAR FRAME

to ensure the highest level of flexibility, with modular construction, uncompromisingly tailored to customers applications of today and still remain open to the demands of tomorrow.

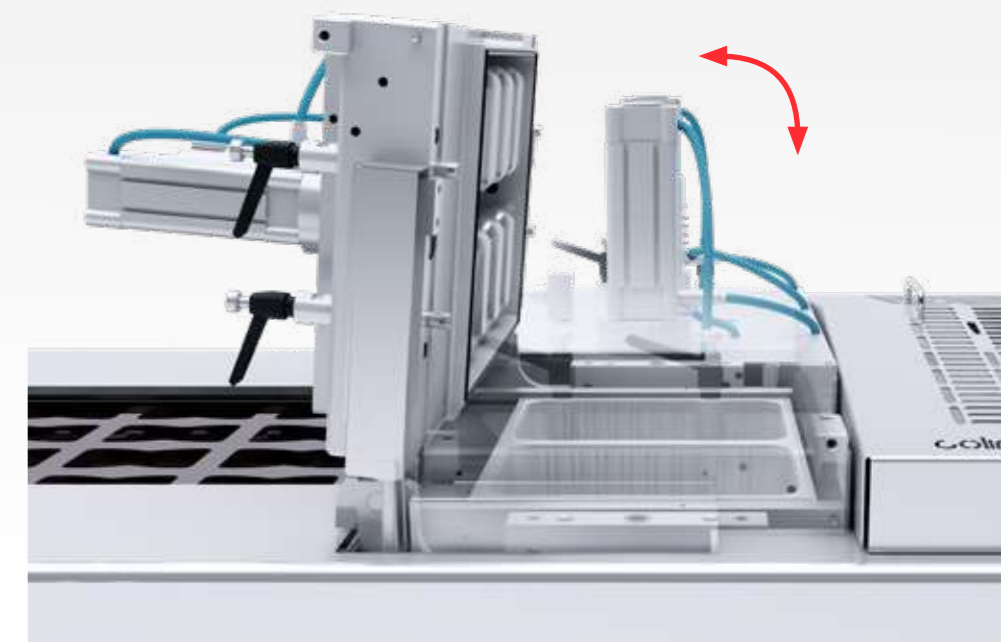


## RESISTIVE OPERATOR PANEL

to allow a friendly HMI use in any working condition. The safety system detects hazards, stops the machine and activates the remote assistance service for faster reaction times.

## HINGED CHAMBERS

with folding opening device to allow the fastest format change, cleaning & maintenance operations.



## TECHNOLOGIES

- Sealing
- Vacuum
- Modified atmosphere (MAP)
- Shrink
- Skinpack
- Posiform
- Double chamber automatic die configuration (FV)
- Multiple Indexes

## COMPONENTS

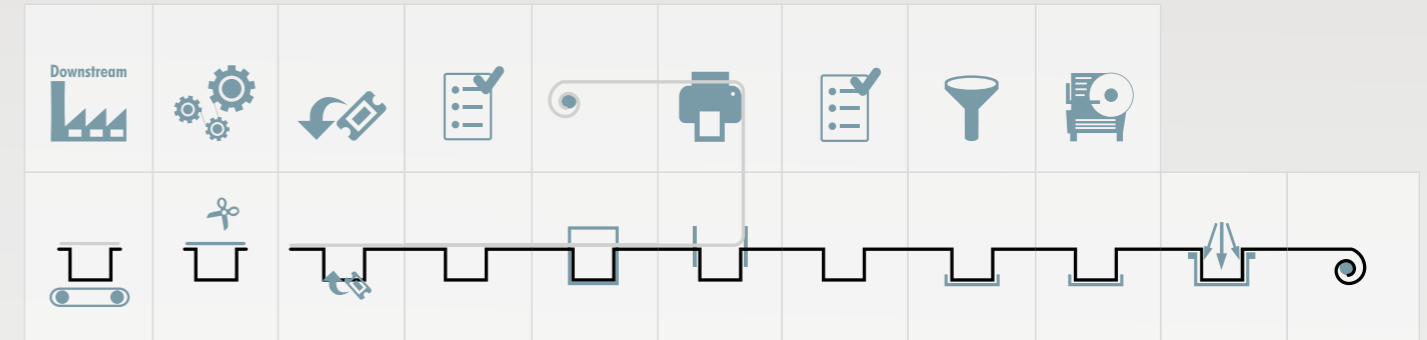
- Electrical: PLC Siemens
- Pneumatic: FESTO
- Vacuum Pumps: BUSCH
- Control interface: PLC Siemens

## PERFORMANCE

- Production: Up to 35 cycles/min
- Film material: film thickness up to 1200 my
- Top film reel Max diam. 500 mm
- Bottom film reel Max diam. 500 mm

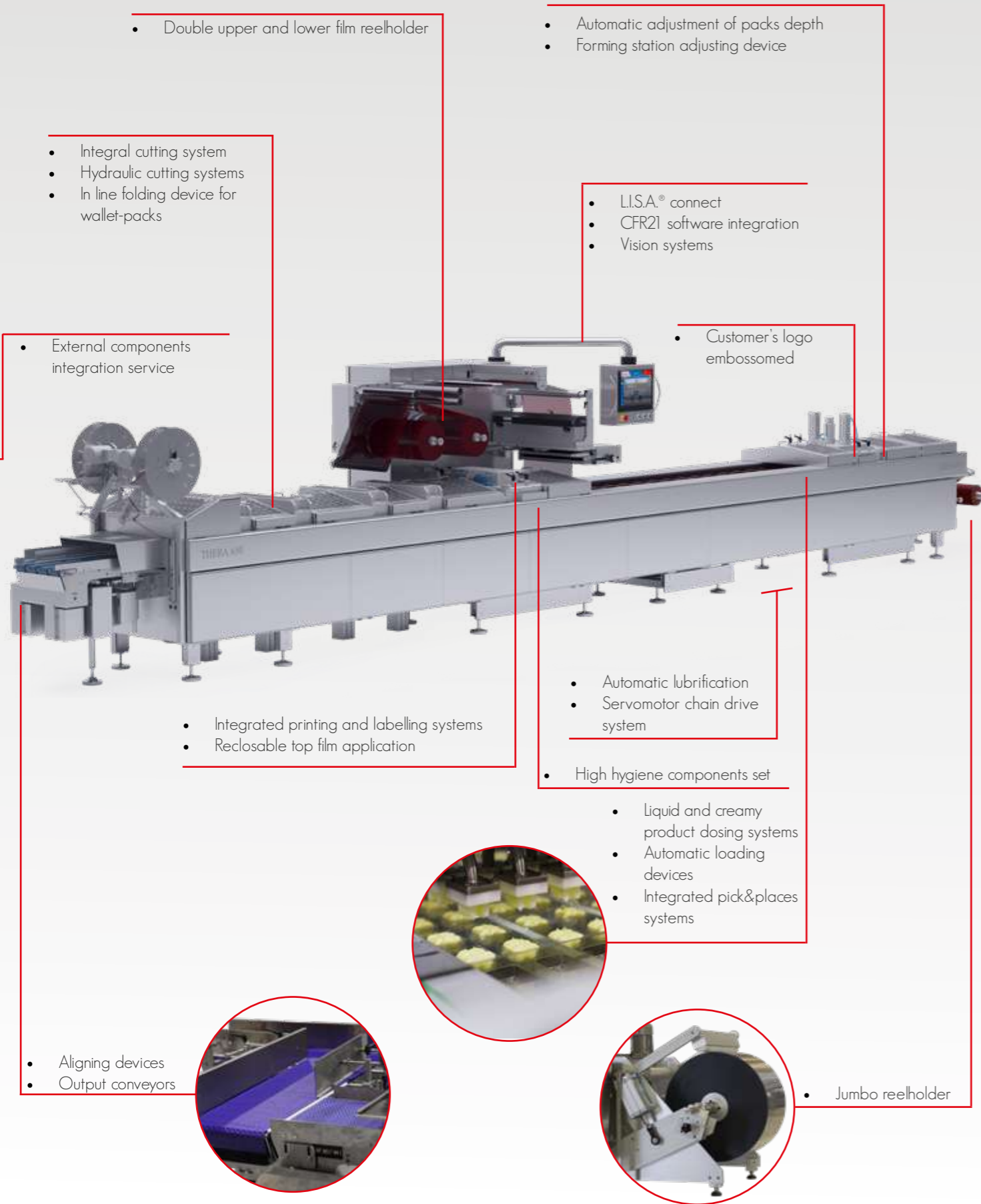
## TECHNICAL FEATURES

- Machine length: Customized
- Machine width: up to 1200 mm
- Machine height: up to 2000 mm
- Loading area: Customized
- Bottom film width: up to 660 mm
- Top film width: Up to 640 mm
- Max advancing index: Up to 1100 mm
- Pack max depth: Up to 220 mm

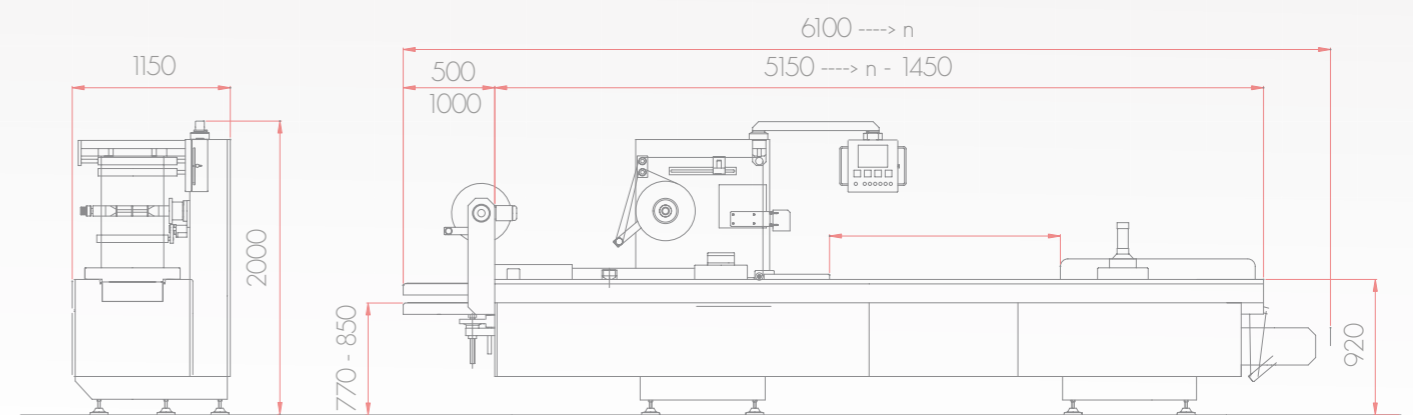




# OPTIONALS



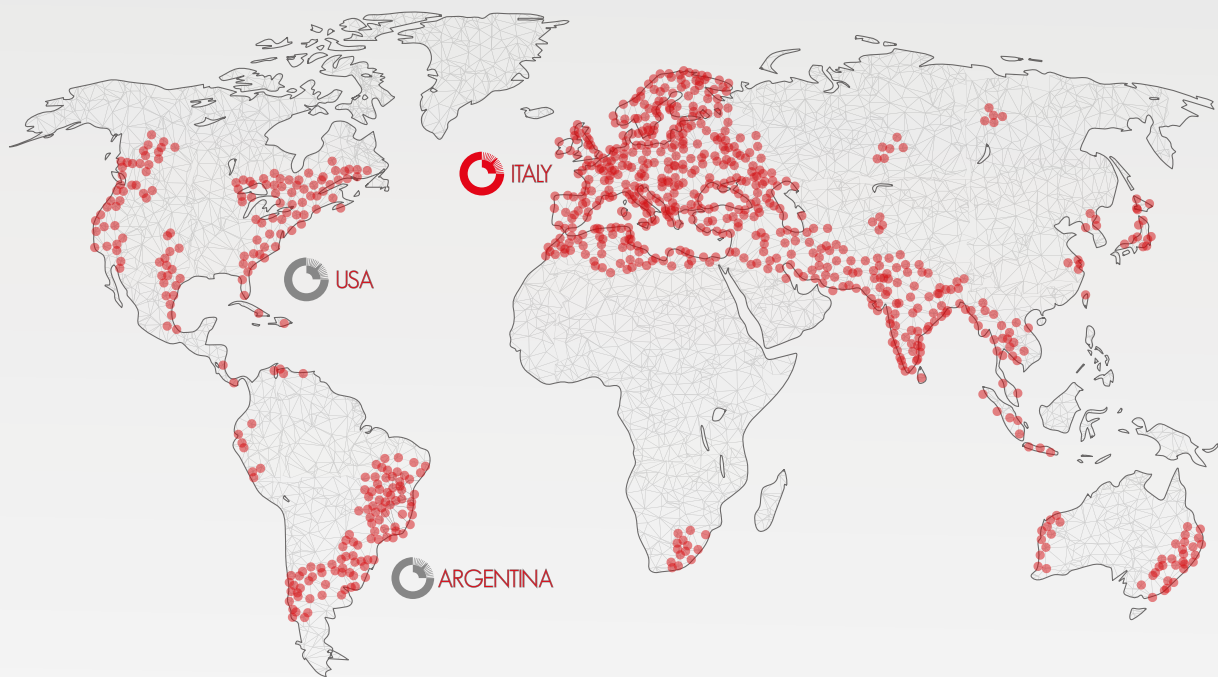
# NOTE



# ITALIAN SOUL



## GLOBAL ATTITUDE



SMALL  
ENOUGH TO LISTEN  
**BIG** ENOUGH  
TO SERVE!



COLIGROUP S.p.A Via del lavoro A, 9 25032  
CHIARI (BS) Italy  
Phone - 39 030 7000761/2/3  
Fax - 39 030 713370  
Email: [info@colimatic.it](mailto:info@colimatic.it) [www.colimatic.com](http://www.colimatic.com)